



N39.438°

N39.4308°

N39.4236°

3204° W90.3132°

W90.306°

W90.2988°

W90.2916°

W90.2844°

W90.2772°

W

THE HANOR COMPANY

APPLE CREEK
IMPAIRED WITH
FECAL COLIFORM

Google earth

Image USDA Farm Service Agency

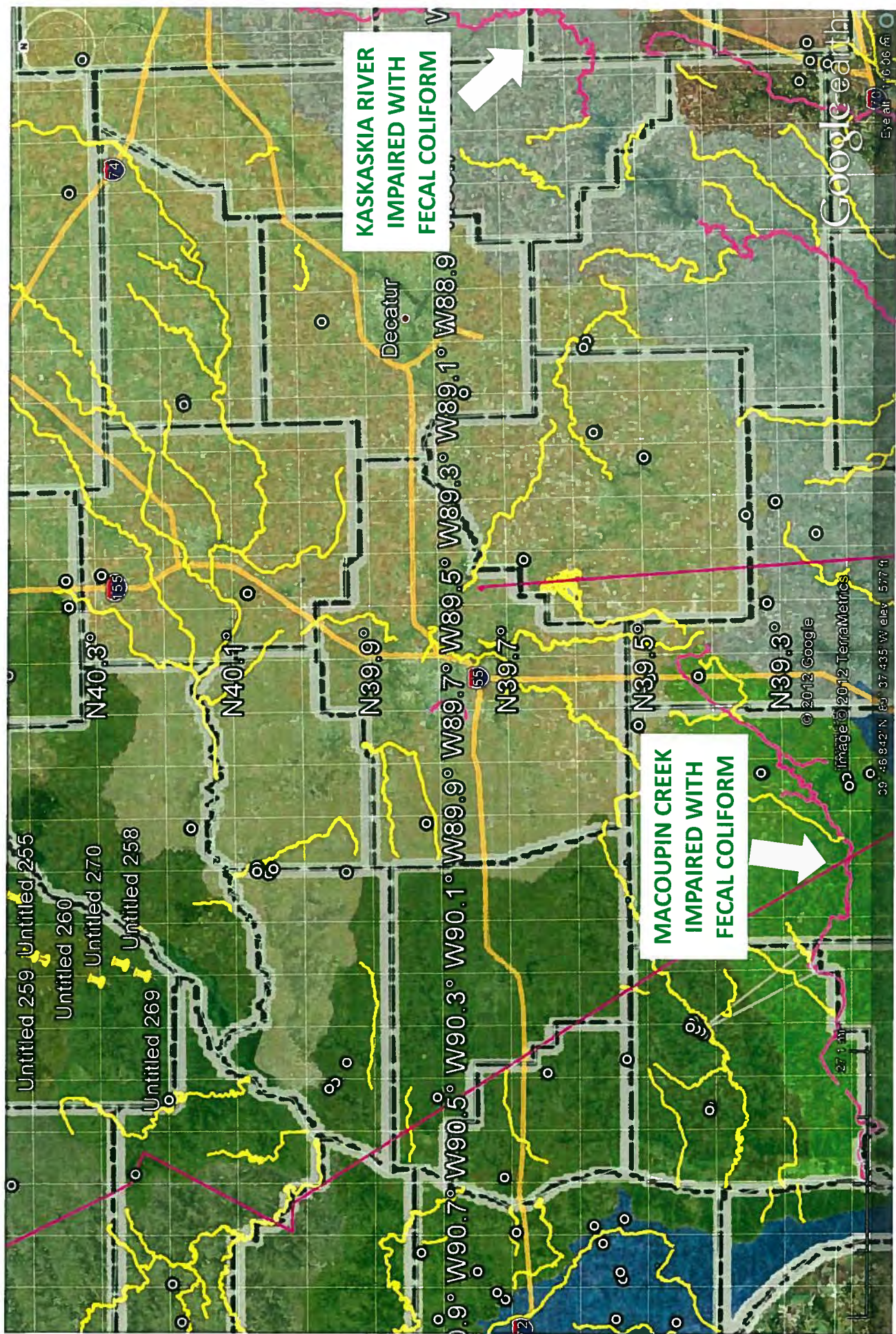
N39.4236°

39° 25' 67.4" N 90° 17' 7.69" W Elevation: 477 ft

Eye alt: 12655 ft

1998

2920 ft



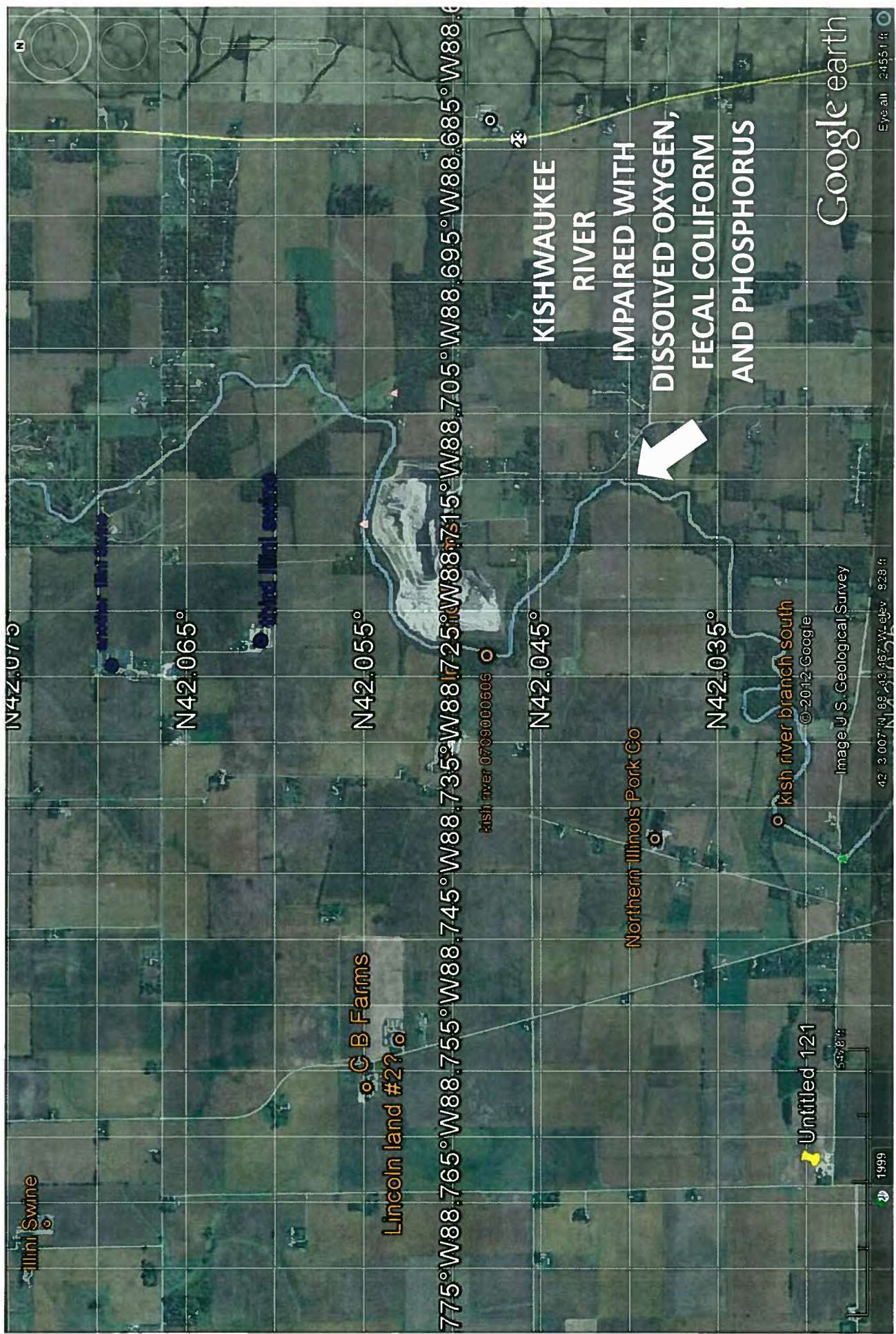
**KASKASKIA RIVER
IMPAIRED WITH
FECAL COLIFORM**

**MACOUPIN CREEK
IMPAIRED WITH
FECAL COLIFORM**

Untitled 259
Untitled 260
Untitled 270
Untitled 258
Untitled 269

Google Earth
Eye alt: 16.06 ft

© 2012 Google
Image © 2012 TerraMetrics
39° 46' 9.42" N 89° 37' 43.5" W elev: 577 ft



Illini Swine

C B Farms
Lincoln land #2?

Kish river 0703000605

Northern Illinois Pork Co

Kish river branch south

Untitled 121

KISHWAUKEE RIVER
IMPAIRED WITH DISSOLVED OXYGEN, FECAL COLIFORM AND PHOSPHORUS

Google earth

Eye alt 24551 ft

1999

Image U.S. Geological Survey

42 3 007 N 69 13 467 W 467 828 ft

N42.075

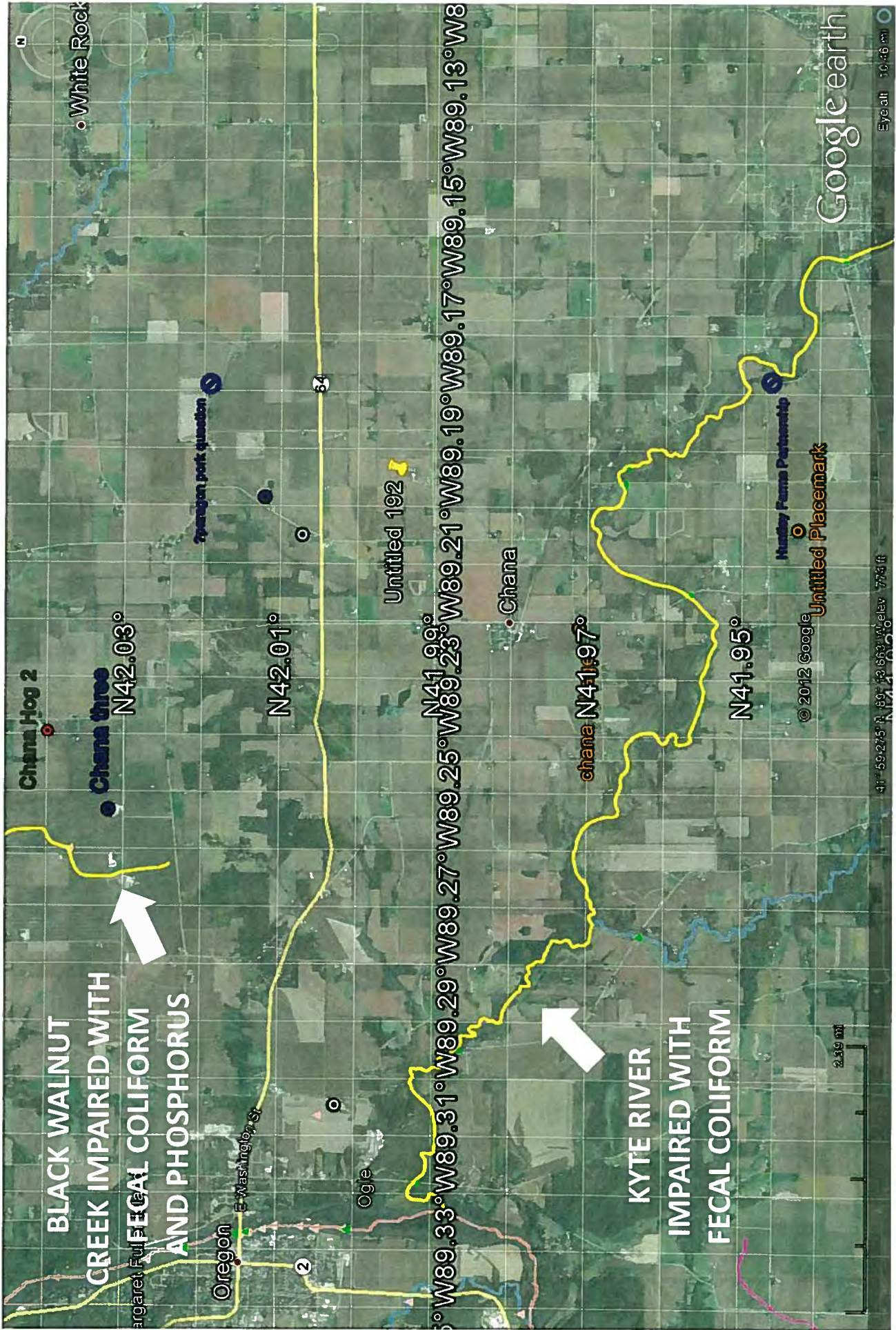
N42.065

N42.055

N42.045

N42.035

W88.775 W88.765 W88.755 W88.745 W88.735 W88.725 W88.715 W88.705 W88.695 W88.685 W88.675



**BLACK WALNUT
CREEK IMPAIRED WITH
FECAL COLIFORM
AND PHOSPHORUS**

**KYTE RIVER
IMPAIRED WITH
FECAL COLIFORM**

Chana Hog 2

Chana three

N42.03°

N42.01°

Untitled 192

N41.99°

Chana

chana N41:97°

N41.95°

Muddy Farm Partnership

Untitled Placemark

© 2012 Google

Google earth

Eye alt 10.46 mi

2.39 mi

N

White Rock

Oregon pork question

34

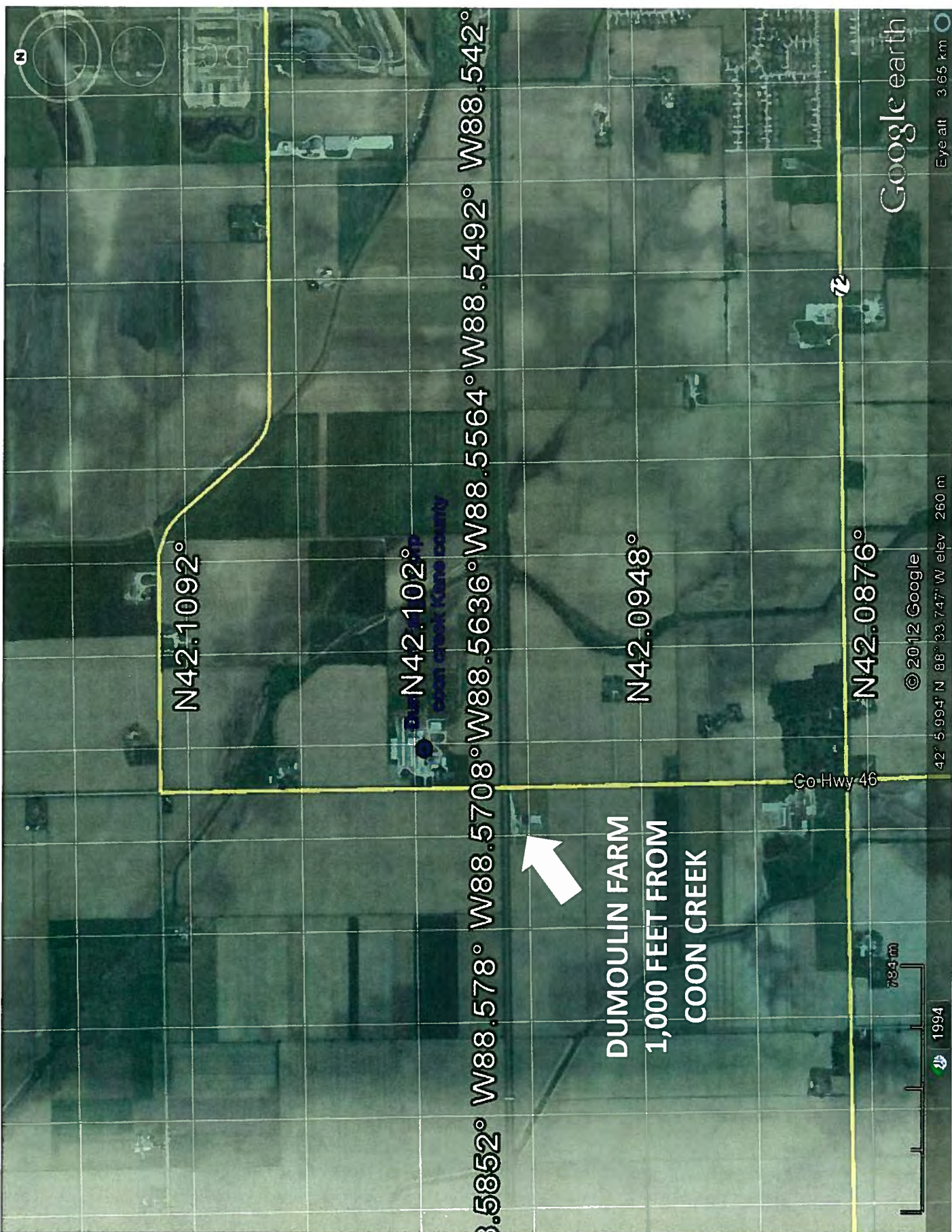
Oregon

E Washington St

Ogle

W89.33° W89.31° W89.29° W89.27° W89.25° W89.23° W89.21° W89.19° W89.17° W89.15° W89.13° W8

41° 59.275' N 189° 13.853' W elev: 773 ft



N42.1092°

N42.102°

N42.0948°

N42.0876°

W88.578° W88.5708° W88.5636° W88.5564° W88.5492° W88.542°



DUMOULIN FARM
1,000 FEET FROM
COON CREEK

Co-Hwy 46

785 m

1994

© 2012 Google

42° 5.994' N 88° 33.747' W elev 260 m

Google earth

Eye alt 3.65 km